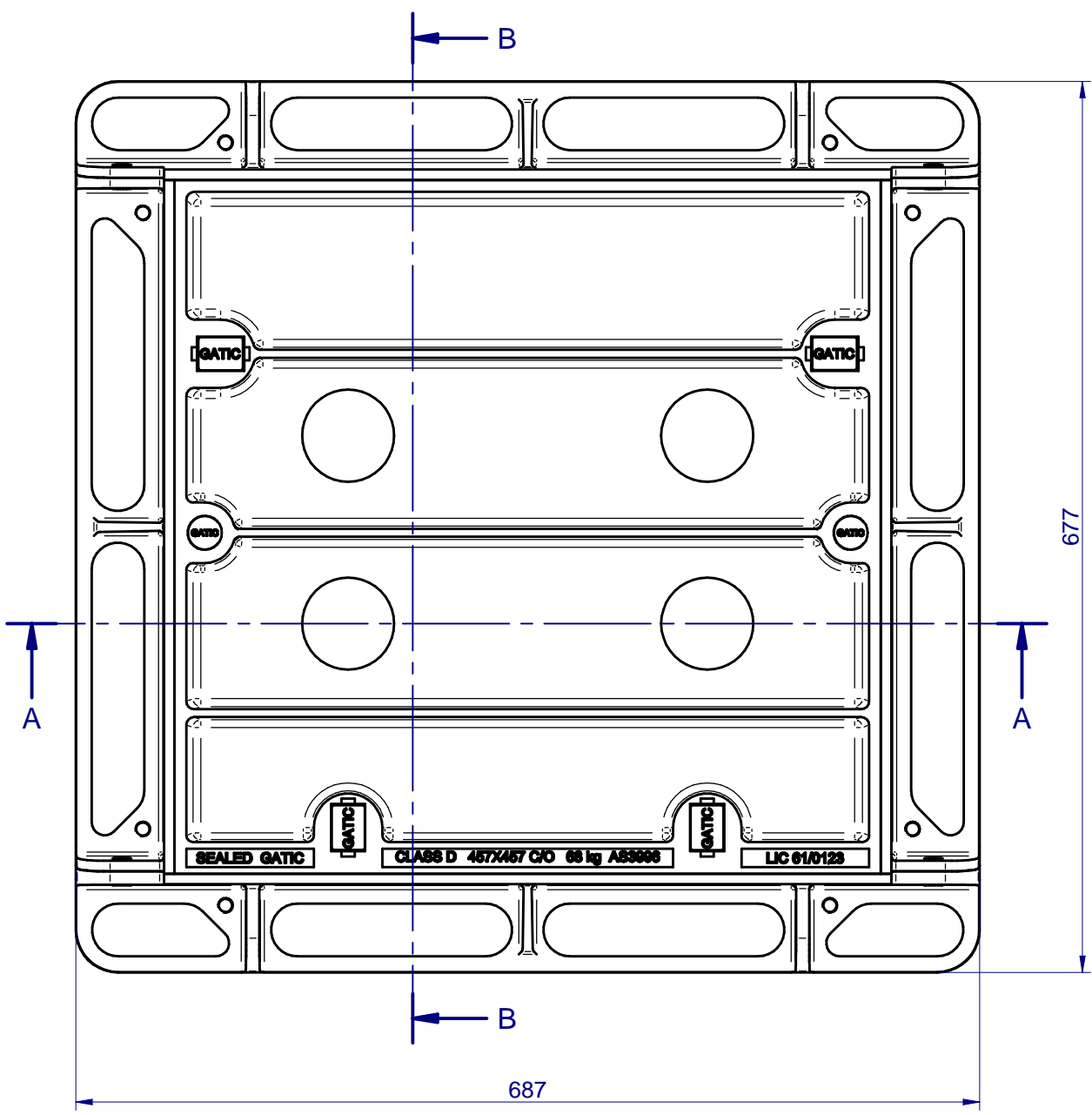
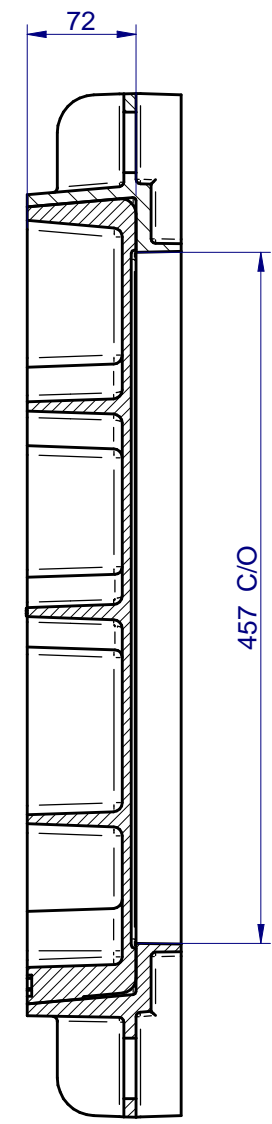
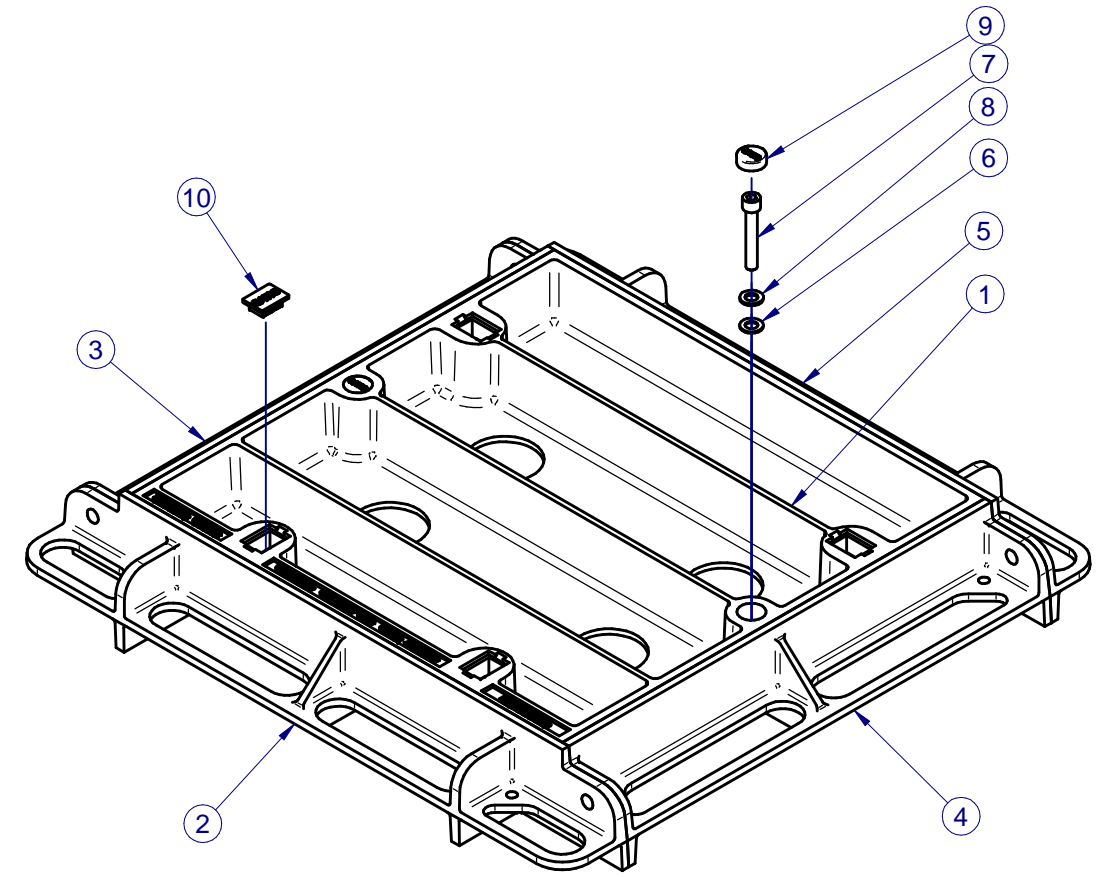
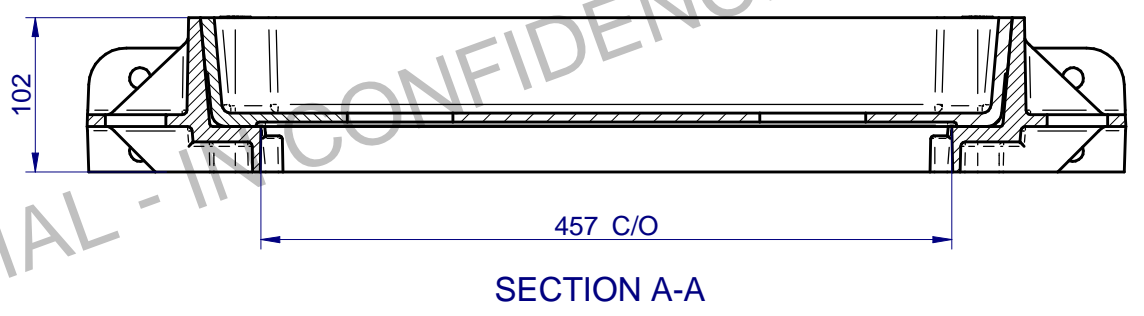


COMMERCIAL - IN CONFIDENCE



**NOTE:**  
8 only of M10x50 bolts required for assembly C/W washers and nuts.

Item	Dwg.	Rev.	Title	Material	Qty.	Mass
1	1691	D	457x457 C/O Concrete Infill Cover Class D	Ductile Iron 500 - 7	1	33.7
2	4000	B	Side Bar 527mm	Ductile Iron 500-7	1	9.2
3	4001	C	527 mm LH Side Bar	Ductile Iron 500-7	1	7.7
4	4002	C	527 mm RH Side Bar	Ductile Iron 500 - 7	1	7.7
5	4003	B	Side Bar 527mm	Ductile Iron 500-7	1	7.7
6	2856	A	M10 Washer	Nylon, general purpose	2	0.0
7	2857	A	M10x65 Socket Head Cap Bolt	Stainless Steel, 304	2	0.1
8	2855	A	M10 Washer	Stainless Steel, 304	2	0.0
9	2854	C	Plastic Plug Ø26 mm	UV Stabilized Nylon	2	0.0
10	1681	A	Plastic Keyhole Plug	UV Stabilized Nylon	4	0.0

Copyright : Gatic Pty Ltd - 2014

REVISION	No	DATE	DESCRIPTION	BY	CKD.
A	10-07-14	INITIAL RELEASE.		S.S.	S.S.

**UNLESS OTHERWISE STATED**  
ALL MEASURES IN MILLIMETERS.  
GENERAL CAST TOLERANCES: CT9 to ISO 8062.  
CASTING RADII: 3 mm  
DRAFT TAPERS: 2°

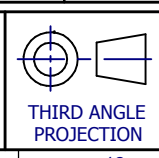
LINEAR MACHINING TOLERANCE:  
X. ±0.25 mm  
X.X ±0.10 mm

ANGULAR MACHINING TOLERANCE:  
X. ±0.5°  
X.X ±0.1°

NOM = Nominal; O/A = Overall; TYP = Typical; C/O = Clear Opening

**FINISH:** ALL CAST SURFACES TO BE PAINTED AS SPECIFIED. FABRICATED COMPONENTS TO BE HOT DIP GALVANISED TO AS/NZS 4680. LIGHT FILM OF GATIC SEALING GREASE TO BE APPLIED ON ALL MACHINED SURFACES.

**GATIC**  
GATIC PTY LTD  
9-15 Radford Road, PO Box 312, Reservoir VIC. 3073  
Ph- 03 9316 2666 Fax- 03 9315 0099 www.gatic.com.au



DESIGNED:	BY	DATE	CODE:
S.S.	S.S.	10-07-14	GM301C44D
DRAWN:	CHECKED:	APPROVED:	SCALE:
S.S.	S.S.	H.B.	N.T.S.
S.S.	S.S.	H.B.	FORMAT: A3
H.B.	H.B.	H.B.	SHEET: 1 of 1

TITLE:	DRG. No:	REV:
457x457 CONCRETE INFILL COVER CLASS D - ASSEMBLY	5027	A
MATERIAL:		MASS: 64.0 kg